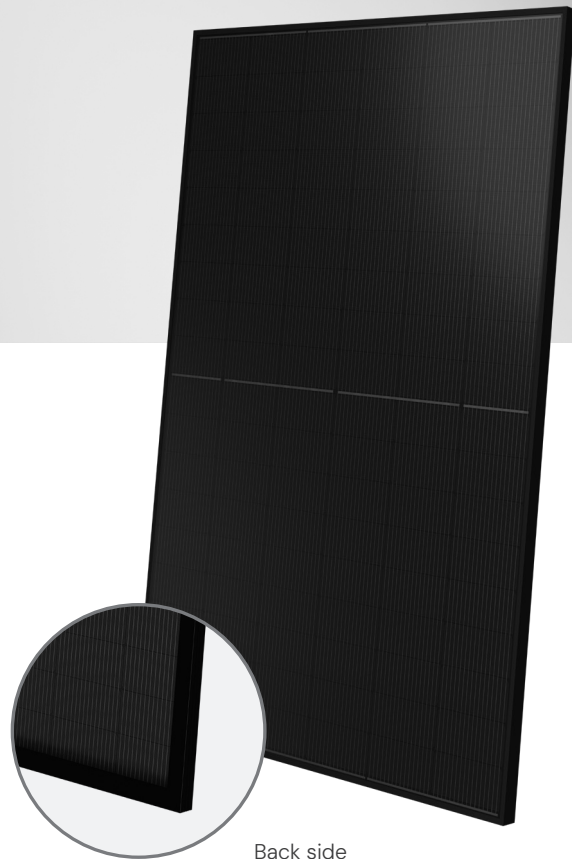


OR10H430MNDB (FB)

OR Series – 430 W

108 cells
MONO M10 HALF | N-TYPE



Extra-EU module

Manufactured in our production factory



TOPCon bifacial technology



Anti-reflective double glass

Maximum efficiency and high performance



Compact and sturdy frame

Anchorable also on the short side ⁽⁵⁾



Class of reaction to fire

Class 1 (UNI 9177),
B-s1, d0 (EN 13501-1)
B_{ROOF}(t1) (EN 13501-5)



30 years

Linear power warranty

25 years

Product warranty



QBE insurance

QBE Product Liability Insurance

QBE is a global leader in the insurance sector, offering comprehensive solutions for business risk management. With a worldwide network, it protects clients against a wide range of risks and provides flexible insurance solutions tailored to various industries, including the energy sector.

OR10H430MNDB (FB)

Electrical Characteristics (STC) ⁽¹⁾

Nominal Output (Pmax) ⁽²⁾	430 W
Sorting Tolerance	0/+5 W
Voltage at Pmax (Vmp)	32,77 V
Current at Pmax (Imp)	13,12 A
Open Circuit Voltage (Voc) ⁽²⁾	38,45 V
Short Circuit Current (Isc) ⁽²⁾	14,01 A
Maximum System Voltage	1500 V
Maximum Series Fuse Rating	30 A
Module Efficiency	22,02% 21,52%
Protection class against electric shock	Classe II

1. STC: (Standard Test Condition) Irradiance 1000 W/m²; Module Temperature 25 °C; Air Mass 1,5

2. Pmax, Voc, Isc measurement tolerance: ±3%

Electrical Characteristics with rear side power gain

Pmax gain	5%	10%	15%	20%	25%
Nominal Output (Pmax)	451 W	473 W	494 W	516 W	537 W
Voltage at Pmax (Vmp)	32,77 V	32,77 V	32,77 V	32,77 V	32,77 V
Current at Pmax (Imp)	13,78 A	14,43 A	15,09 A	15,74 A	16,40 A
Open Circuit Voltage (Voc)	38,45 V	38,45 V	38,45 V	38,45 V	38,45 V
Short Circuit Current (Isc)	14,71 A	15,41 A	16,11 A	16,81 A	17,51 A

Mechanical Characteristics

Solar Cells	108 M10 HALF monocrystalline N-TYPE
Solar Cells Size	182 x 91 mm / 7,16 x 3,58"
Front Cover	2,0 mm / 0,08" thick, low iron tempered glass
Back Cover	2,0 mm / 0,08" thick, low iron tempered glass
Encapsulant	EVA / POE
Frame	Anodized aluminium alloy, double wall
Frame finishing	Black
Diodes	3 Bypass diodes serviceable
Junction Box	IP68 rated
Connector	MC4 or compatible connector
Cables Length	1100 mm / 43,30"
Cables Section	4,0 mm ² / 0,006 in ²
Dimensions	1722 x 1134 x 30 mm / 67,79 x 44,64 x 1,18" 1762 x 1134 x 30 mm / 69,37 x 44,64 x 1,18"
Weight	23,24 kg / 51,2 lbs - 23,77 kg / 52,4 lbs
Max Load (Test Load) - SF	5400 Pa - 1,5 ⁽⁵⁾

5. Consult the installation manual for the relative mounting configurations

Temperature Characteristics

NMOT ⁽³⁾	43±2 °C
Temperature Coefficient of Pmax	-0,29 %/°C
Temperature Coefficient of Voc	-0,25 %/°C
Temperature Coefficient of Isc	0,046 %/°C
Operating Temperature	-40 °C ~ +85 °C

3. NMOT: Nominal Module Operating Temperature; Irradiance 800 W/m²; Air 20 °C; Wind speed 1 m/s

Packaging ⁽⁴⁾

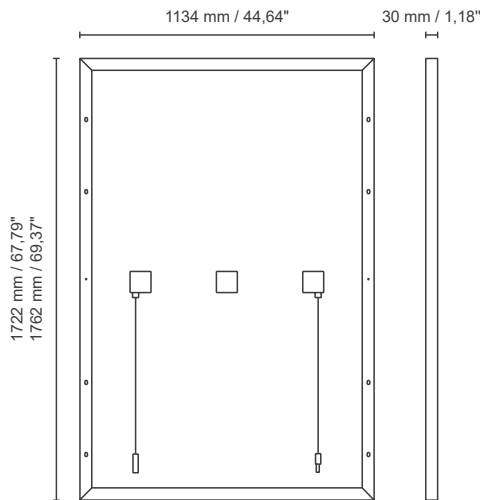
Pallet dimensions	1750 x 1130 x 1265 mm / 68,9 x 44,5 x 49,8" 1780 x 1130 x 1265 mm / 70,1 x 44,5 x 49,8"
Pieces per pallet	36
Weight	864 kg / 1904,8 lbs 883 kg / 1946,68 lbs

4. Pallets can be stacked up to two

Certifications

Reaction to fire	Class 1 (UNI 9177), B-s1, d0 (EN 13501-1), B _{roof} (t1) (EN 13501-5)
Product Certificate	IEC 61215-1, IEC 61215-1-1, IEC 61215-2, IEC 61730-1, IEC 61730-2

Dimensions



Current/Voltage Characteristics

